

## JOHANN SEBASTIAN CIRCUS

Technical file

*Theatre version*

## ASSEMBLY TIMETABLE AND TECHNICAL TEAM

Day prior to performance:

- **Morning**\_set rigging:
  - 1 handler to help unload company material
  - 1 stagehand
  - 1 electrician
- **Afternoon**\_light and sound: 1 electrician available to help with rigging and focus.

Day of performance:

- **Morning**\_finishing touches and final technical tests
- **Early afternoon**\_company rehearsals
- **2 hours** prior to doors opening\_miss en place: 1 helper available to clean stage
- **5 minutes** prior to performance\_doors opening

Duration of performance: 60 minutes (no curtains)

Disassembly 2-3 hours: person available for disassembly

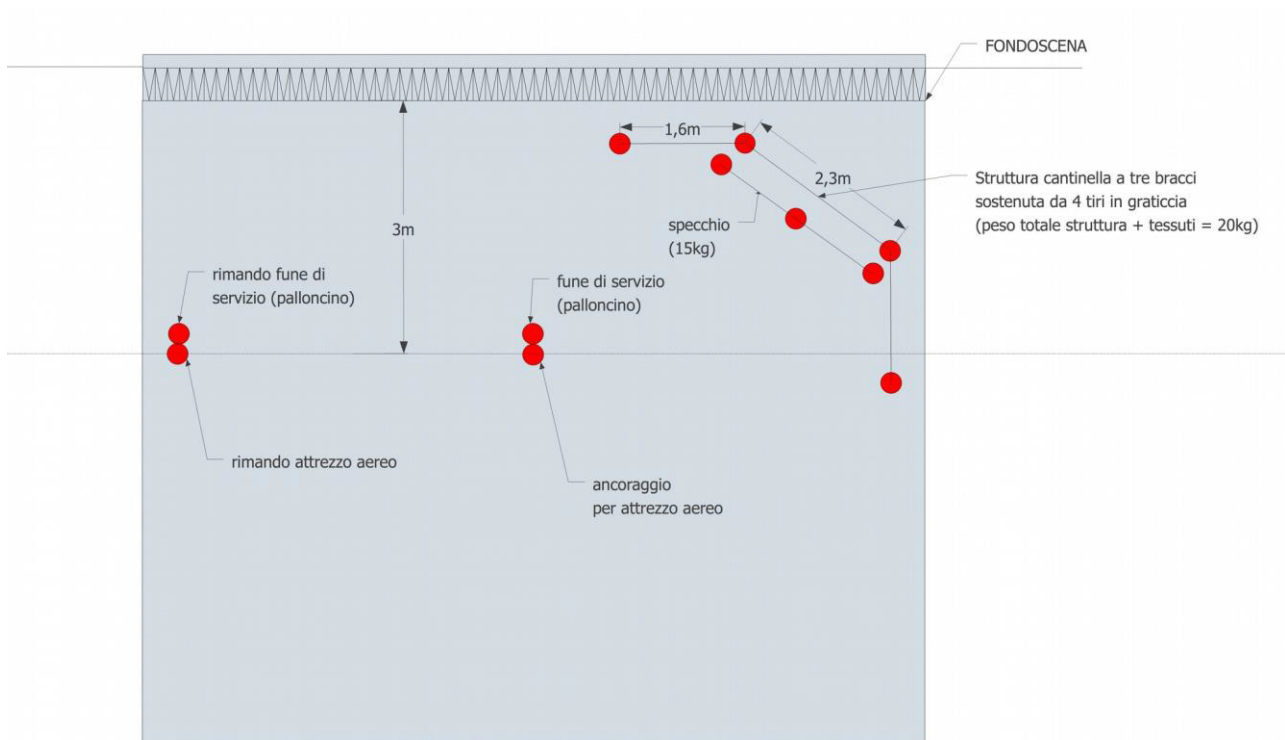
### To be borne by the hosts

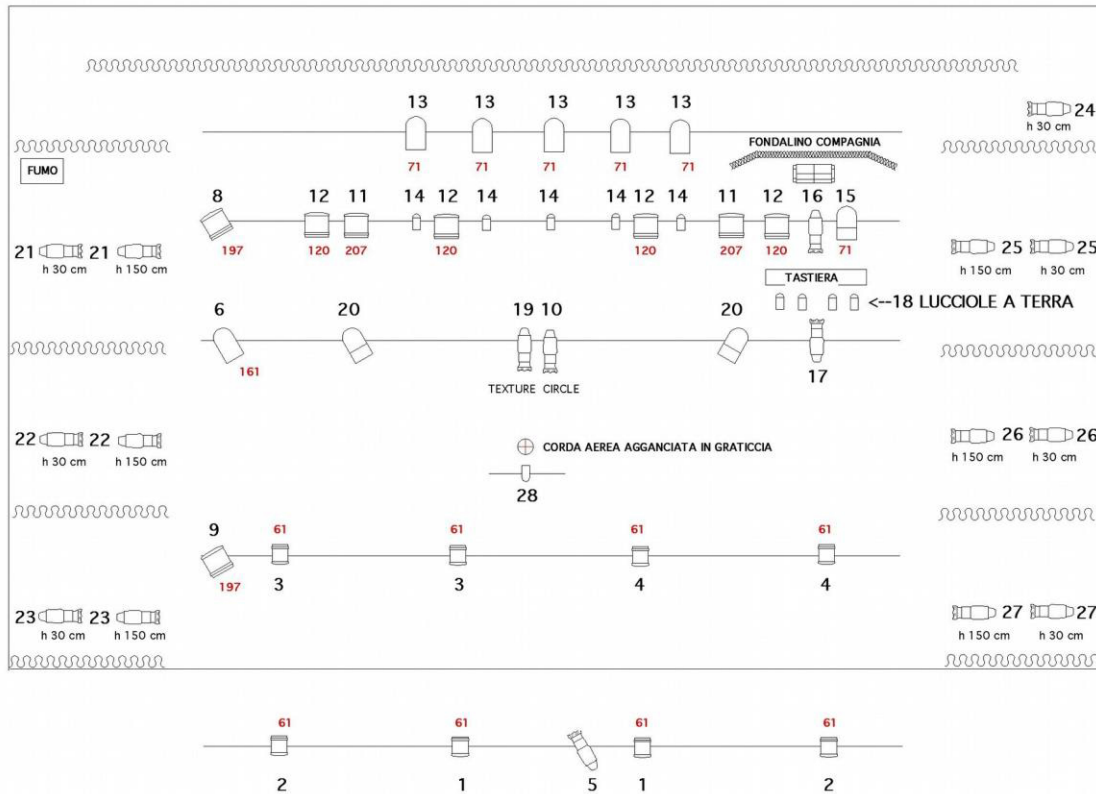
#### Stage:

- black backdrop with central opening, Italian mask, minimum 3 wings (actual number to be agreed according to actual stage depth)
- height: 6 meters
- width: minimum 9m
- depth: 8.0m in front of company curtain

**Hanging points:** 2 ceiling suspensions each with load-bearing capacity of 200kg. The first placed center stage, the second off stage for the same line to be operated by a flyman.

Show's scenery is a backdrop with its own structure made of three arms (tot 20kg) plus a 15kg mirror placed in parallel of the structure, 20cm far from the central arm. The installation required 7 ropes from the grid.





### LEGENDA

- nr° 8 PC/FRESNELL 2000W
- nr° 8 PC 1000W
- nr° 18 SAGOMATORI ETC 25°/50° di cui 2 con PORTA GOBOS
- nr° 6 PAR 64 cp 61 1000W
- nr° 3 PAR 64 cp 62 1000W
- nr° 10 PAR 36-SUPER LUCCIOLA
- nr° 1 STROBO ATOMIC 3000
- nr° 1 MACCHINA FUMMO

TUTTI I PROIETTORI DEVONO ESSERE COMPLETI DI BANDIERE E PORTAGELATINE

SI RICHIEDE INOLTRE:

- Nr° 1 MIXER LUCI ETC SMARTFADE 2496
- Nr° 36 CANALI DIMMER
- Nr° 10 BASETTE X PROIETTORI
- GELATINE Nr° 061, 071, 120, 197, 161, 207

The STROBO ATOMIC 3000 might be replaced with something similar.  
Company will take care of gels.

**Sound:**

- Mixing console with a minimum of 8 mic + 2 stereo inputs.
- Drum mic set
- 2 short mic stands
- 1 standard mic stand
- 1 handheld wireless mic
- adequate P.A. for the venue + 2 stage monitors 500w minimum
- 1 digitec effect pedal placed on the far corner right.

**Control booth:** sound and light consoles must be close to each other.

**Dressing rooms**

For three artists: washbasin, mirror, hot shower and winter heating. When possible: bottle of non-sparkling water, fruit juice, fresh and/or dry fruit.

This technical file corresponds to an optimal installation and is complementary to the contract.  
Please do not hesitate to contact us for any further information.

[info@circoelgrito.it](mailto:info@circoelgrito.it)

<http://www.circoelgrito.it>